

JARD by MARS

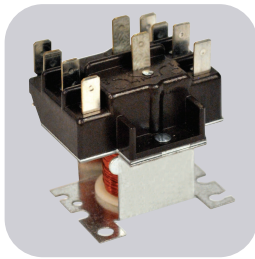


Table of Contents

| Description | Page No. |
|---|------------|
| Capacitors | |
| Motor Run | J-3 – J-5 |
| Motor Start | J-6 |
| Accessories | J-7 |
| Definite Purpose Contactors | J-8 |
| Switching Relays | J-9 |
| Pressure Switches | J-10, J-11 |
| Fuses | J-11 |
| Unit Bearing Motors | J-12 |
| Condenser Fan Motors | J-12 |
| Direct Drive Furnace Blower Motors | J-13 |
| Mult-Horsepower Direct Drive Motors | J-13 |
| Mult-Horsepower Condenser Fan Motors | J-14, J-15 |
| JARD Cross Reference Guide | J-16 |

Single Section Run Capacitors

Features:

- JARD provides a low cost alternative to popular models and the widest selection of ratings in the industry
- Non-PCB capacitors
- Physical interrupter makes our capacitors safe
- Perfect for general replacements
- Capacitor accessories – see page J-7
- UL and CSA listings available



| SINGLE SECTION 370 VOLT OVAL | | | | |
|------------------------------|------------|--------------------|--------------|--------------|
| JARD NO. | MICROFARAD | CASE HEIGHT INCHES | WIDTH INCHES | DEPTH INCHES |
| 12902 | 2 | 1.63 | 2.06 | 1.21 |
| 12903 | 3 | 1.50 | 2.06 | 1.21 |
| 12904 | 4 | 1.50 | 2.06 | 1.21 |
| 12905 | 5 | 1.50 | 2.06 | 1.21 |
| 12906 | 6 | 1.50 | 2.06 | 1.21 |
| 12907 | 7.5 | 1.50 | 2.06 | 1.21 |
| 12908 | 10 | 1.50 | 2.06 | 1.21 |
| 12909 | 12.5 | 1.50 | 2.06 | 1.21 |
| 12910 | 15 | 1.63 | 2.06 | 1.21 |
| 12912 | 17.5 | 1.63 | 2.06 | 1.21 |
| 12914 | 20 | 2.38 | 2.06 | 1.21 |
| 12915 | 25 | 2.63 | 2.06 | 1.21 |
| 12917 | 30 | 3.00 | 2.06 | 1.21 |
| 12918 | 35 | 3.38 | 2.06 | 1.21 |
| 12921 | 40 | 3.75 | 2.06 | 1.21 |
| 12923 | 45 | 3.75 | 2.06 | 1.21 |
| 12925 | 50 | 4.75 | 2.06 | 1.21 |
| 12924 | 55 | 4.75 | 2.06 | 1.21 |
| 12987 | 60 | 2.38 | 2.81 | 1.81 |
| 12988 | 65 | 3.75 | 2.81 | 1.81 |
| 12989 | 70 | 2.63 | 2.81 | 1.81 |
| 12990 | 80 | 4.00 | 2.81 | 1.81 |

| SINGLE SECTION 370 VOLT ROUND | | | |
|-------------------------------|------------|--------------------|--------------|
| JARD NO. | MICROFARAD | CASE HEIGHT INCHES | DEPTH INCHES |
| 12992 | 2 | 2.00 | 1.75 |
| 12993 | 3 | 2.00 | 1.75 |
| 12994 | 4 | 2.00 | 1.75 |
| 12995 | 5 | 2.00 | 1.75 |
| 12996 | 6 | 2.00 | 1.75 |
| 12997 | 7.5 | 2.00 | 1.75 |
| 12998 | 10 | 2.00 | 1.75 |
| 12999 | 12.5 | 2.00 | 1.75 |
| 12710 | 15 | 2.00 | 1.75 |
| 12911 | 16 | 2.00 | 1.75 |
| 12712 | 17.5 | 2.00 | 1.75 |
| 12714 | 20 | 2.00 | 1.75 |
| 12715 | 25 | 2.00 | 1.75 |
| 12717 | 30 | 2.00 | 1.75 |
| 12718 | 35 | 2.38 | 1.75 |
| 12721 | 40 | 2.38 | 1.75 |
| 12723 | 45 | 2.38 | 1.75 |
| 12725 | 50 | 2.63 | 1.75 |
| 12726 | 55 | 2.63 | 1.75 |
| 12727 | 60 | 3.00 | 1.75 |
| 12828 | 65 | 3.00 | 1.75 |
| 12729 | 70 | 3.38 | 1.75 |
| 12899 | 80 | 3.38 | 1.75 |
| 12916 | 100 | 4.00 | 1.75 |

| SINGLE SECTION 440/370 VOLT OVAL | | | | |
|----------------------------------|------------|--------------------|--------------|--------------|
| JARD NO. | MICROFARAD | CASE HEIGHT INCHES | WIDTH INCHES | DEPTH INCHES |
| 12926 | 2 | 1.50 | 2.06 | 1.21 |
| 12919 | 2.5 | 1.50 | 2.06 | 1.21 |
| 12927 | 3 | 1.50 | 2.06 | 1.21 |
| 12928 | 4 | 1.50 | 2.06 | 1.21 |
| 12929 | 5 | 1.50 | 2.06 | 1.21 |
| 12930 | 6 | 1.50 | 2.06 | 1.21 |
| 12931 | 7.5 | 1.50 | 2.06 | 1.21 |
| 12932 | 10 | 1.50 | 2.06 | 1.21 |
| 12933 | 12.5 | 1.63 | 2.06 | 1.21 |
| 12934 | 15 | 2.38 | 2.06 | 1.21 |
| 12936 | 17.5 | 2.38 | 2.06 | 1.21 |
| 12937 | 20 | 2.63 | 2.06 | 1.21 |
| 12940 | 25 | 3.00 | 2.06 | 1.21 |
| 12941 | 30 | 3.38 | 2.06 | 1.21 |
| 12943 | 35 | 3.75 | 2.06 | 1.21 |
| 12945 | 40 | 4.75 | 2.06 | 1.21 |
| 12948 | 45 | 4.75 | 2.06 | 1.21 |
| 12949 | 50 | 2.38 | 2.81 | 1.81 |
| 12950 | 55 | 2.63 | 2.81 | 1.81 |
| 12951 | 60 | 2.75 | 2.81 | 1.81 |
| 12952 | 65 | 3.00 | 2.81 | 1.81 |
| 12830 | 70 | 3.00 | 2.81 | 1.81 |
| 12831 | 75 | 3.38 | 2.81 | 1.81 |
| 12840 | 80 | 3.38 | 2.81 | 1.81 |

| SINGLE SECTION 440/370 VOLT ROUND | | | |
|-----------------------------------|------------|--------------------|--------------|
| JARD NO. | MICROFARAD | CASE HEIGHT INCHES | DEPTH INCHES |
| 12802 | 2 | 2.00 | 1.75 |
| 12803 | 3 | 2.00 | 1.75 |
| 12804 | 4 | 2.00 | 1.75 |
| 12805 | 5 | 2.00 | 1.75 |
| 12806 | 6 | 2.00 | 1.75 |
| 12807 | 7.5 | 2.00 | 1.75 |
| 12732 | 10 | 2.00 | 1.75 |
| 12733 | 12.5 | 2.00 | 1.75 |
| 12734 | 15 | 2.00 | 1.75 |
| 12736 | 17.5 | 2.00 | 1.75 |
| 12737 | 20 | 2.00 | 1.75 |
| 12740 | 25 | 2.00 | 1.75 |
| 12741 | 30 | 2.38 | 1.75 |
| 12743 | 35 | 2.38 | 1.75 |
| 12745 | 40 | 2.63 | 1.75 |
| 12748 | 45 | 3.00 | 1.75 |
| 12751 | 50 | 3.00 | 1.75 |
| 12752 | 55 | 3.38 | 1.75 |
| 12754 | 60 | 3.38 | 1.75 |
| 12657 | 65 | 4.00 | 2.50 |
| 12758 | 70 | 3.75 | 1.75 |
| 12759 | 80 | 4.00 | 1.75 |
| 12868 | 90 | 3.88 | 2.00 |

Motor Run Capacitors

Dual Section Motor Run Capacitors

Dual section run capacitors are used primarily to serve two microfarad applications. They can, however, by making various combinations of parallel connections, be used to obtain many other microfarad ratings.



12841

Features:

- Non-PCB capacitors
Physical interrupter makes our capacitors safe
- Perfect for general replacements
- Capacitor accessories – see page J-7
- UL and CSA listings available

| DUAL SECTION 370 VOLT OVAL | | | | |
|----------------------------|------------|--------------------|--------------|--------------|
| JARD NO. | MICROFARAD | CASE HEIGHT INCHES | WIDTH INCHES | DEPTH INCHES |
| 12841 | 15/3 | 2.38 | 2.81 | 1.81 |
| 12956 | 15/4 | 2.38 | 2.81 | 1.81 |
| 12957 | 15/5 | 2.38 | 2.81 | 1.81 |
| 12958 | 15/10 | 2.38 | 2.81 | 1.81 |
| 12959 | 17.5/4 | 2.63 | 2.81 | 1.81 |
| 12960 | 17.5/5 | 2.63 | 2.81 | 1.81 |
| 12961 | 20/3 | 2.38 | 2.81 | 1.81 |
| 12962 | 20/4 | 2.38 | 2.81 | 1.81 |
| 12963 | 20/5 | 2.38 | 2.81 | 1.81 |
| 12864 | 20/10 | 2.38 | 2.81 | 1.81 |
| 12964 | 20/15 | 2.38 | 2.81 | 1.81 |
| 12842 | 25/3 | 2.38 | 2.81 | 1.81 |
| 12965 | 25/4 | 2.38 | 2.81 | 1.81 |
| 12966 | 25/5 | 2.38 | 2.81 | 1.81 |
| 12843 | 25/7.5 | 2.63 | 2.81 | 1.81 |
| 12832 | 25/8 | 2.63 | 2.81 | 1.81 |
| 12867 | 25/10 | 2.38 | 2.81 | 1.81 |
| 12833 | 25/15 | 2.38 | 2.81 | 1.81 |
| 12844 | 30/3 | 2.38 | 2.81 | 1.81 |
| 12845 | 30/4 | 2.38 | 2.81 | 1.81 |
| 12969 | 30/5 | 2.38 | 2.81 | 1.81 |
| 12846 | 30/7.5 | 2.38 | 2.81 | 1.81 |
| 12847 | 30/10 | 2.38 | 2.81 | 1.81 |
| 12848 | 35/3 | 2.63 | 2.81 | 1.81 |
| 12971 | 35/4 | 2.38 | 2.81 | 1.81 |
| 12972 | 35/5 | 2.38 | 2.81 | 1.81 |
| 12849 | 35/7.5 | 2.38 | 2.81 | 1.81 |
| 12850 | 35/10 | 2.38 | 2.81 | 1.81 |
| 12851 | 40/3 | 3.00 | 2.81 | 1.81 |
| 12858 | 40/4 | 2.63 | 2.81 | 1.81 |
| 12871 | 40/5 | 2.38 | 2.81 | 1.81 |
| 12852 | 40/7.5 | 2.63 | 2.81 | 1.81 |
| 12834 | 40/10 | 3.00 | 2.81 | 1.81 |
| 12874 | 45/5 | 2.63 | 2.81 | 1.81 |
| 12853 | 45/7.5 | 2.63 | 2.81 | 1.81 |
| 12836 | 45/10 | 2.63 | 2.81 | 1.81 |
| 12837 | 45/15 | 2.63 | 2.81 | 1.81 |
| 12838 | 50/5 | 2.63 | 2.81 | 1.81 |
| 12854 | 55/5 | 3.75 | 2.81 | 1.81 |
| 12855 | 55/7.5 | 2.63 | 2.81 | 1.81 |
| 12839 | 60/5 | 2.63 | 2.81 | 1.81 |
| 12856 | 60/7.5 | 2.63 | 2.81 | 1.81 |
| 12857 | 60/10 | 3.75 | 2.81 | 1.81 |
| 12859 | 65/5 | 3.00 | 2.81 | 1.81 |
| 12863 | 80/5 | 3.38 | 2.81 | 1.81 |
| 12817 | 80/7.5 | 3.38 | 2.81 | 1.81 |

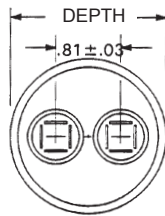
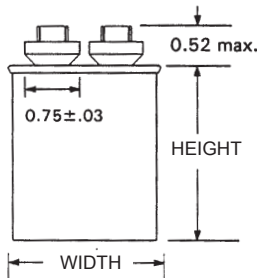
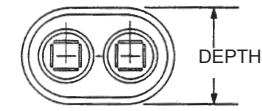
| DUAL SECTION 370 VOLT ROUND | | | |
|-----------------------------|------------|--------------------|--------------|
| JARD NO. | MICROFARAD | CASE HEIGHT INCHES | DEPTH INCHES |
| 12701 | 15/3 | 3.13 | 2.00 |
| 12702 | 15/4 | 2.13 | 2.00 |
| 12703 | 15/5 | 2.13 | 2.00 |
| 12704 | 15/10 | 2.13 | 2.00 |
| 12705 | 17.5/4 | 2.13 | 2.00 |
| 12706 | 17.5/5 | 3.13 | 2.00 |
| 12707 | 20/4 | 2.13 | 2.00 |
| 12760 | 20/5 | 2.13 | 2.00 |
| 12716 | 20/7.5 | 2.63 | 2.00 |
| 12708 | 20/10 | 2.13 | 2.00 |
| 12709 | 20/15 | 3.13 | 2.00 |
| 12711 | 25/3 | 2.13 | 2.00 |
| 12875 | 25/4 | 2.13 | 2.00 |
| 12761 | 25/5 | 2.13 | 2.00 |
| 12762 | 25/7.5 | 2.13 | 2.00 |
| 12713 | 25/10 | 2.13 | 2.00 |
| 12720 | 30/3 | 2.13 | 2.00 |
| 12763 | 30/4 | 2.13 | 2.00 |
| 12764 | 30/5 | 2.13 | 2.00 |
| 12724 | 30/7.5 | 2.13 | 2.00 |
| 12728 | 30/10 | 3.13 | 2.00 |
| 12939 | 30/15 | 3.63 | 2.00 |
| 12730 | 35/3 | 2.13 | 2.00 |
| 12731 | 35/4 | 2.13 | 2.00 |
| 12766 | 35/5 | 2.13 | 2.00 |
| 12735 | 35/7.5 | 2.13 | 2.00 |
| 12738 | 35/10 | 2.13 | 2.00 |
| 12739 | 40/3 | 2.75 | 2.00 |
| 12767 | 40/4 | 2.75 | 2.00 |
| 12878 | 40/5 | 2.75 | 2.00 |
| 12768 | 40/7.5 | 2.75 | 2.00 |
| 12746 | 40/10 | 2.75 | 2.00 |
| 12747 | 45/3 | 2.75 | 2.00 |
| 12947 | 45/4 | 2.75 | 2.00 |
| 12769 | 45/5 | 2.75 | 2.00 |
| 12749 | 45/7.5 | 2.75 | 2.00 |
| 12750 | 45/10 | 2.75 | 2.00 |
| 12753 | 50/3 | 2.75 | 2.00 |
| 12755 | 50/5 | 2.75 | 2.00 |
| 12825 | 50/7.5 | 2.75 | 2.00 |
| 12757 | 50/10 | 2.75 | 2.00 |
| 12893 | 55/5 | 2.75 | 2.00 |
| 12894 | 55/7.5 | 2.75 | 2.00 |
| 12967 | 55/10 | 2.75 | 2.00 |
| 12976 | 60/3 | 2.75 | 2.00 |
| 12895 | 60/5 | 3.13 | 2.00 |
| 12896 | 60/7.5 | 2.75 | 2.00 |
| 12865 | 60/10 | 2.75 | 2.00 |
| 12742 | 65/5 | 3.13 | 2.00 |
| 12953 | 70/5 | 3.13 | 2.00 |
| 12954 | 70/7.5 | 3.13 | 2.00 |
| 12955 | 70/10 | 3.13 | 2.00 |
| 12744 | 75/5 | 3.13 | 2.00 |
| 12946 | 75/7.5 | 3.13 | 2.00 |
| 12984 | 75/10 | 3.13 | 2.00 |
| 12897 | 80/5 | 3.88 | 2.00 |
| 12819 | 80/7.5 | 3.88 | 2.00 |
| 12824 | 80/10 | 3.88 | 2.00 |
| 12722 | 80/12.5 | 3.88 | 2.00 |
| 12829 | 85/5 | 3.88 | 2.00 |
| 12756 | 85/7.5 | 4.75 | 2.00 |
| 12922 | 85/10 | 3.88 | 2.00 |

*Capacitors may be put in different case sizes occasionally, but will not be larger than those stated.

Base Dimensions on page J-5

Capacitor Base Dimensions

Capacitor accessories – see page J-7



| DUAL SECTION 440/370 VOLT ROUND | | | |
|---------------------------------|------------|--------------------|--------------|
| JARD NO. | MICROFARAD | CASE HEIGHT INCHES | DEPTH INCHES |
| 12811 | 10/5 | 3.13 | 2.00 |
| 12818 | 15/5 | 2.13 | 2.00 |
| 12656 | 15/10 | 3.63 | 2.00 |
| 12650 | 17.5/5 | 3.63 | 2.00 |
| 12780 | 20/5 | 2.13 | 2.00 |
| 12654 | 20/7.5 | 2.13 | 2.00 |
| 12651 | 20/10 | 2.13 | 2.00 |
| 12812 | 20/15 | 2.13 | 2.00 |
| 12653 | 25/3 | 2.13 | 2.00 |
| 12655 | 25/4 | 2.13 | 2.00 |
| 12778 | 25/5 | 2.13 | 2.00 |
| 12779 | 25/7.5 | 2.13 | 2.00 |
| 12813 | 25/10 | 2.13 | 2.00 |
| 12814 | 25/15 | 3.13 | 2.00 |
| 12826 | 30/3 | 2.13 | 2.00 |
| 12820 | 30/4 | 2.13 | 2.00 |
| 12781 | 30/5 | 2.13 | 2.00 |
| 12782 | 30/7.5 | 2.75 | 2.00 |
| 12652 | 30/10 | 2.75 | 2.00 |
| 12977 | 35/3 | 2.75 | 2.00 |
| 12870 | 35/4 | 2.75 | 2.00 |
| 12783 | 35/5 | 2.75 | 2.00 |
| 12719 | 35/6 | 2.75 | 2.00 |
| 12784 | 35/7.5 | 2.75 | 2.00 |
| 12797 | 35/10 | 2.75 | 2.00 |
| 12978 | 40/3 | 2.75 | 2.00 |
| 12785 | 40/4 | 2.75 | 2.00 |
| 12786 | 40/5 | 2.75 | 2.00 |
| 12920 | 40/6 | 2.75 | 2.00 |
| 12787 | 40/7.5 | 2.75 | 2.00 |
| 12798 | 40/10 | 2.75 | 2.00 |
| 12979 | 45/3 | 2.75 | 2.00 |
| 12891 | 45/4 | 2.75 | 2.00 |
| 12788 | 45/5 | 2.75 | 2.00 |
| 12827 | 45/6 | 2.75 | 2.00 |
| 12789 | 45/7.5 | 2.75 | 2.00 |
| 12872 | 45/10 | 2.75 | 2.00 |
| 12790 | 50/5 | 3.13 | 2.00 |
| 12791 | 50/7.5 | 2.75 | 2.00 |
| 12892 | 50/10 | 3.13 | 2.00 |
| 12792 | 55/5 | 3.13 | 2.00 |
| 12793 | 55/7.5 | 3.13 | 2.00 |
| 12799 | 55/10 | 3.13 | 2.00 |
| 12860 | 60/3 | 3.13 | 2.00 |
| 12794 | 60/5 | 3.13 | 2.00 |
| 12795 | 60/7.5 | 3.13 | 2.00 |
| 12796 | 60/10 | 3.13 | 2.00 |
| 12861 | 60/12.5 | 3.13 | 2.00 |
| 12642 | 65/5 | 3.88 | 2.00 |
| 12659 | 65/7.5 | 4.75 | 2.50 |
| 12862 | 65/10 | 3.88 | 2.00 |
| 12823 | 70/5 | 3.88 | 2.00 |
| 12866 | 70/7.5 | 3.88 | 2.00 |
| 12869 | 70/10 | 3.88 | 2.00 |
| 12968 | 75/5 | 3.88 | 2.00 |
| 12901 | 75/7.5 | 3.88 | 2.00 |
| 12935 | 75/10 | 3.88 | 2.00 |
| 12801 | 80/5 | 3.88 | 2.00 |
| 12816 | 80/7.5 | 3.88 | 2.00 |
| 12821 | 80/10 | 3.88 | 2.00 |
| 12938 | 85/5 | 3.88 | 2.00 |
| 12942 | 85/7.5 | 3.88 | 2.00 |
| 12944 | 85/10 | 3.88 | 2.00 |

| DUAL SECTION 440/370 VOLT OVAL | | | | |
|--------------------------------|------------|--------------------|--------------|--------------|
| JARD NO. | MICROFARAD | CASE HEIGHT INCHES | WIDTH INCHES | DEPTH INCHES |
| 12660 | 5/5 | 2.38 | 2.81 | 1.81 |
| 12765 | 10/5 | 3.13 | 2.81 | 1.81 |
| 12970 | 10/10 | 2.38 | 2.81 | 1.81 |
| 12770 | 15/4 | 2.38 | 2.81 | 1.81 |
| 12771 | 15/5 | 2.38 | 2.81 | 1.81 |
| 12777 | 15/10 | 2.63 | 2.81 | 1.81 |
| 12880 | 20/5 | 2.38 | 2.81 | 1.81 |
| 12983 | 20/15 | 2.38 | 2.81 | 1.81 |
| 12884 | 25/5 | 2.38 | 2.81 | 1.81 |
| 12882 | 25/7.5 | 3.00 | 2.81 | 1.81 |
| 12883 | 25/10 | 2.38 | 2.81 | 1.81 |
| 12886 | 25/15 | 3.75 | 2.81 | 1.81 |
| 12881 | 30/4 | 2.63 | 2.81 | 1.81 |
| 12887 | 30/5 | 2.63 | 2.81 | 1.81 |
| 12982 | 30/7.5 | 2.63 | 2.81 | 1.81 |
| 12835 | 30/10 | 2.63 | 2.81 | 1.81 |
| 12985 | 35/3 | 2.63 | 2.81 | 1.81 |
| 12879 | 35/4 | 2.63 | 2.81 | 1.81 |
| 12885 | 35/5 | 2.63 | 2.81 | 1.81 |
| 12888 | 35/7.5 | 2.63 | 2.81 | 1.81 |
| 12876 | 35/8.5 | 3.00 | 2.81 | 1.81 |
| 12772 | 35/10 | 2.63 | 2.81 | 1.81 |
| 12877 | 40/3 | 3.00 | 2.81 | 1.81 |
| 12986 | 40/5 | 3.00 | 2.81 | 1.81 |
| 12889 | 40/7.5 | 3.00 | 2.81 | 1.81 |
| 12773 | 40/10 | 2.63 | 2.81 | 1.81 |
| 12890 | 45/5 | 3.00 | 2.81 | 1.81 |
| 12774 | 45/7.5 | 3.00 | 2.81 | 1.81 |
| 12808 | 50/5 | 3.00 | 2.81 | 1.81 |
| 12913 | 50/7.5 | 3.00 | 2.81 | 1.81 |
| 12775 | 55/5 | 3.00 | 2.81 | 1.81 |
| 12822 | 55/10 | 3.00 | 2.81 | 1.81 |
| 12809 | 60/5 | 3.75 | 2.81 | 1.81 |
| 12776 | 60/7.5 | 3.75 | 2.81 | 1.81 |
| 12810 | 65/10 | 4.75 | 3.56 | 1.88 |
| 12815 | 80/5 | 3.75 | 2.81 | 1.81 |
| 12898 | 80/7.5 | 3.75 | 2.81 | 1.81 |

*Capacitors may be put in different case sizes occasionally, but will not be larger than those stated.

Motor Start Capacitors

Motor Start Capacitors

JARD Motor Start Capacitors provide a low cost alternative to popular models available. MARS offers the largest assortment of capacitor ratings in the industry.

These electrolytic capacitors feature a hermetically sealed black bakelite case which permanently protects the capacitor from oil, dirt, grease or moisture.

Capacitor accessories – see page J-7



| 110/125 DUAL VOLTAGE AC | | |
|-------------------------|------------|-----------|
| JARD NO. | MICROFARAD | CASE SIZE |
| 11902 | 21-25 | 1 |
| 11903 | 25-30 | 1 |
| 11904 | 30-36 | 1 |
| 11905 | 36-43 | 1 |
| 11906 | 43-56 | 1 |
| 11907 | 56-67 | 1 |
| 11908 | 72-88 | 1 |
| 11909 | 88-107 | 1 |
| 11910 | 108-130 | 1 |
| 11912 | 124-155 | 1 |
| 11911 | 130-156 | 1 |
| 11913 | 145-174 | 1 |
| 11914 | 161-193 | 1 |
| 11915 | 189-227 | 1 |
| 11916 | 200-240 | 1 |
| 11917 | 216-259 | 1 |
| 11918 | 233-291 | 1 |
| 11919 | 270-324 | 1 |
| 11920 | 300-360 | 1 |
| 11921 | 324-388 | 1 |
| 11922 | 340-408 | 1 |
| 11923 | 378-438 | 1 |
| 11924 | 400-480 | 1 |
| 11971 | 430-516 | 1 |
| 11925 | 460-552 | 1 |
| 11926 | 540-648 | 2 |
| 11927 | 590-708 | 4 |
| 11947 | 645-774 | 4 |
| 11928 | 708-850 | 4 |
| 11972 | 815-970 | 4 |
| 11929 | 829-995 | 4 |
| 11973 | 850-1020 | 4 |
| 11930 | 1000-1200 | 4 |
| 11974 | 1290-1548 | 5 |

| 165 VOLTAGE AC | | |
|----------------|------------|-----------|
| JARD NO. | MICROFARAD | CASE SIZE |
| 11975 | 72-88 | 1 |
| 11976 | 88-107 | 1 |
| 11977 | 108-130 | 1 |
| 11931 | 124-149 | 1 |
| 11932 | 145-174 | 1 |
| 11933 | 161-193 | 1 |
| 11934 | 189-227 | 1 |
| 11978 | 216-259 | 2 |
| 11935 | 233-292 | 2 |
| 11936 | 270-324 | 2 |
| 11979 | 340-408 | 4 |
| 11980 | 378-455 | 4 |
| 11994 | 400-480 | 4 |
| 11981 | 540-648 | 4 |
| 11982 | 710-852 | 5 |
| 11983 | 810-972 | 5 |

| 220/250 DUAL VOLTAGE AC | | |
|-------------------------|------------|-----------|
| JARD NO. | MICROFARAD | CASE SIZE |
| 11938 | 21-25 | 1 |
| 11939 | 25-30 | 1 |
| 11940 | 30-36 | 1 |
| 11941 | 36-43 | 1 |
| 11942 | 43-56 | 1 |
| 11943 | 56-70 | 1 |
| 11984 | 59-71 | 1 |
| 11937 | 64-77 | 1 |
| 11944 | 72-88 | 1 |
| 11945 | 88-107 | 1 |
| 11946 | 108-130 | 4 |
| 11948 | 124-155 | 4 |
| 11949 | 145-175 | 4 |
| 11950 | 161-193 | 4 |
| 11951 | 189-227 | 4 |
| 11952 | 216-259 | 4 |
| 11953 | 233-292 | 4 |
| 11954 | 270-324 | 4 |
| 11985 | 280-336 | 4 |
| 11986 | 320-384 | 4 |
| 11987 | 340-408 | 4 |
| 11988 | 378-454 | 5 |
| 11989 | 400-480 | 5 |
| 11990 | 430-516 | 5 |
| 11991 | 630-756 | 8 |

| 330 VOLTAGE AC | | |
|----------------|------------|-----------|
| JARD NO. | MICROFARAD | CASE SIZE |
| 11955 | 21-25 | 1 |
| 11956 | 25-30 | 1 |
| 11957 | 30-36 | 1 |
| 11958 | 36-43 | 1 |
| 11959 | 43-56 | 2 |
| 11995 | 56-67 | 2 |
| 11960 | 64-77 | 2 |
| 11961 | 72-88 | 2 |
| 11962 | 88-108 | 2 |
| 11963 | 108-130 | 5 |
| 11964 | 130-156 | 5 |
| 11965 | 124-156 | 5 |
| 11992 | 135-162 | 5 |
| 11966 | 145-174 | 5 |
| 11967 | 161-193 | 5 |
| 11968 | 189-227 | 5 |
| 11969 | 216-259 | 7 |
| 11970 | 270-324 | 7 |
| 11993 | 300-360 | 8 |

| CASE DIMENSIONS | | |
|-----------------|--------------------|---------------|
| CASE SIZE | DIAMETER IN INCHES | LENGTH INCHES |
| 1 | 1.44 | 2.75 |
| 2 | 1.44 | 3.38 |
| 4 | 1.81 | 3.38 |
| 5 | 1.81 | 4.38 |
| 6 | 2.06 | 3.38 |
| 7 | 2.06 | 4.38 |
| 8 | 2.56 | 4.38 |

*Capacitors may be put in different case sizes occasionally, but will not be larger than those stated.

QC-6 Kit

93001

For conversion of screw-type connections on relays



Resistor for Start Capacitors

93007

2 watt (15,000 ohm) Resistors



Snap-on Mounting Brackets for Motor Start Capacitors

93026 2.75 in

93027 3.38 in

93028 4.38 in



Protector (boots) for Motor Run Capacitors

93011 1 Hole Boot

93012 2 Hole Boot



Wrap-Around Brackets for Oval Motor Run Capacitors

93014 1.94 x 2.78 for base A

93015 1.97 x 2.94 for base C

93116 2.25 x 3.66 for base D



Mounting Brackets for Round Capacitors

93031 For 1.63 in and 1.75 in dia.

93032 For 2.0 in dia.

93033 For 2.50 in dia.



Bakelite End Caps for Motor Start Capacitors

93018 BEC-1 1.44 in

93019 BEC-2 1.81 in

93020 BEC-3 2.06 in

93021 BEC-4 2.56 in

For mounting OFF MOTOR. Leads on top side.

93022 BEC-1 1.44 in

93023 BEC-2 1.81 in

93024 BEC-3 2.06 in

93025 BEC-4 2.56 in



Definite Purpose Contactors

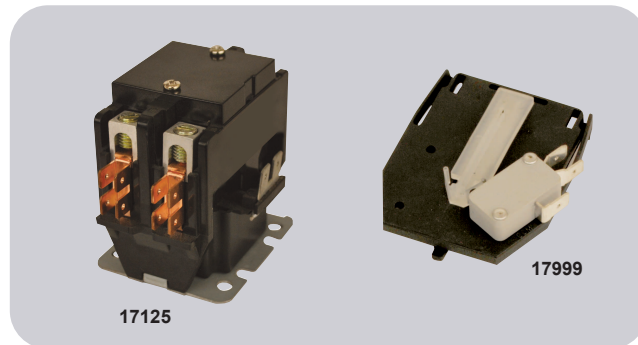
Definite Purpose Contactors

“A Low Cost Alternative By The Name You Trust”

JARD Definite Purpose Contactors are designed for use on refrigeration, air conditioning, and electric heating systems. The universal mounting base allows replacement of most contactor brands. Power connections can be made with either screws & quick connects or lugs & quick connects depending on the style.

Features:

- 2 styles: screw terminals with quick connects or lug terminals with quick connects
- UL (both styles)
- CSA (screw terminal style)
- CUL (lug terminal style)



| JARD W/LUGS | JARD W/SCREWS | FULL LOAD AMPS | RESISTIVE AMPS | COIL VOLTAGE | POLES |
|-------------|---------------|----------------|----------------|--------------|-------|
| 17125 | 17121 | 20 | 30 | 24 | 2 |
| 17126 | 17122 | 20 | 30 | 120 | 2 |
| 17127 | 17123 | 20 | 30 | 240 | 2 |
| 17215 | - | 25 | 35 | 24 | 1-1/2 |
| 17216 | - | 25 | 35 | 120 | 1-1/2 |
| 17217 | - | 25 | 35 | 240 | 1-1/2 |
| 17225 | 17221 | 25 | 35 | 24 | 2 |
| 17226 | 17222 | 25 | 35 | 120 | 2 |
| 17227 | 17223 | 25 | 35 | 240 | 2 |
| 17315 | 17311 | 30 | 40 | 24 | 1-1/2 |
| 17316 | 17312 | 30 | 40 | 120 | 1-1/2 |
| 17317 | 17313 | 30 | 40 | 240 | 1-1/2 |
| 17325 | 17321 | 30 | 40 | 24 | 2 |
| 17326 | 17322 | 30 | 40 | 120 | 2 |
| 17327 | 17323 | 30 | 40 | 240 | 2 |
| 17335 | 17331 | 30 | 40 | 24 | 3 |
| 17336 | 17332 | 30 | 40 | 120 | 3 |
| 17337 | 17333 | 30 | 40 | 240 | 3 |
| 17415 | - | 40 | 50 | 24 | 1-1/2 |
| 17416 | - | 40 | 50 | 120 | 1-1/2 |
| 17417 | - | 40 | 50 | 240 | 1-1/2 |

| JARD W/LUGS | JARD W/SCREWS | FULL LOAD AMPS | RESISTIVE AMPS | COIL VOLTAGE | POLES |
|-------------|---------------|--|----------------|--------------|-------|
| 17425 | - | 40 | 50 | 24 | 2 |
| 17426 | - | 40 | 50 | 120 | 2 |
| 17427 | - | 40 | 50 | 240 | 2 |
| 17435 | - | 40 | 50 | 24 | 3 |
| 17436 | - | 40 | 50 | 120 | 3 |
| 17437 | - | 40 | 50 | 240 | 3 |
| 17535 | - | 50 | 65 | 24 | 3 |
| 17536 | - | 50 | 65 | 120 | 3 |
| 17537 | - | 50 | 65 | 240 | 3 |
| 17635 | - | 60 | 75 | 24 | 3 |
| 17636 | - | 60 | 75 | 120 | 3 |
| 17637 | - | 60 | 75 | 240 | 3 |
| 17735 | - | 75 | 90 | 24 | 3 |
| 17736 | - | 75 | 90 | 120 | 3 |
| 17737 | - | 75 | 90 | 240 | 3 |
| 17935 | - | 90 | 120 | 24 | 3 |
| 17936 | - | 90 | 120 | 120 | 3 |
| 17937 | - | 90 | 120 | 240 | 3 |
| 17997 | | Auxiliary Contact- Fits 75 & 90A 3P models | | | |
| 17998 | | Auxiliary Contact- Fits 50 & 60A 3P models | | | |
| 17999 | | Auxiliary Contact- Fits 40A 3P models | | | |

General Purpose Switching Relays

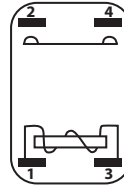
JARD SPST and SPDT Fan Relays are among the most popular electromechanical relays used in air conditioning, heating and refrigeration today.

Features:

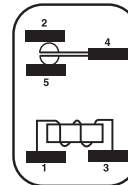
- 16 Amp switching
- 55 Amp inrush current
- Quick-connect terminals
- Tab bracket, Non-positional
- UL and CUR

| JARD NO. | NORMALLY OPEN COIL VOLTAGE | CONTACT RATING 125/250 VAC | | REPLACES ESSEX/RBM NO. |
|-------------|----------------------------|-------------------------------|-----------|---------------------------|
| | | INDUCTIVE | RESISTIVE | |
| SPST | | | | |
| 92290 | 24 | 8 amps | 16 amps | 90-290, 90-290Q |
| 92291 | 110-120 | continuous | 16 amps | 90-291, 90-291Q |
| 92292 | 208/240 | 25 amps inrush | 16 amps | 90-292, 90-292Q |
| SPDT | | | | |
| 92293 | 24 | 8 amps | 16 amps | 90-293, 90-293Q |
| 92294 | 110-120 | continuous | 16 amps | 90-294, 90-294Q |
| 92295 | 208/240 | 25 amps inrush | 16 amps | 90-295, 90-295Q |

Switch Diagrams



92290
92291
92292



92293
92294
92295



Heavy Duty Fan Switching Relays

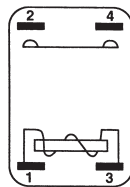
JARD Heavy Duty Fan Relays are used on heating and air conditioning equipment to provide switching of heavier loads with a compact size relay.

Features:

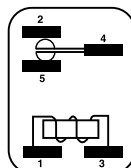
- 25 Amp switching
- Compact and totally enclosed
- Quick-connect terminals
- Tab bracket, Non-positional
- UL and CUR



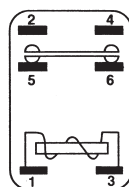
Terminal Identification



SPST-NO



SPDT



SPNO-SPNC

Model Identification

| COIL VOLTAGE | JARD NO. SPST-NO. | JARD NO. NO. SPDT | JARD NO. SPNO-SPNC |
|--------------|-------------------|-------------------|--------------------|
| 24 | 92360 | 92370 | 92380 |
| 110/120 | 92362 | 92372 | 92382 |
| 208/240 | 92364 | 92374 | 92384 |

Contact Rating

| VOLTAGE | FULL LOAD | LOCKED ROTOR | RESISTIVE |
|---------|-----------|--------------|-----------|
| 120 | 12 | 60 | 18 |
| 240 | 8 | 48 | 18 |
| 277 | 7 | 42 | 18 |

Cross Reference:

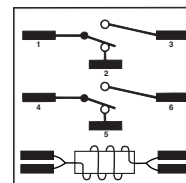
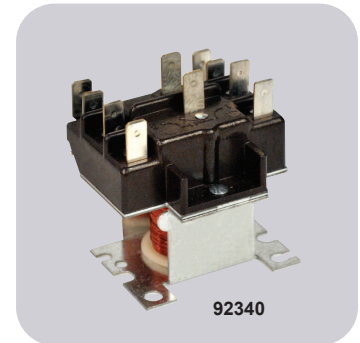
| ESSEX/RBM | JARD NO. | ESSEX/RBM | JARD NO. |
|-----------|----------|-----------|----------|
| 90-360Q | 92360 | 90-374Q | 92374 |
| 90-362Q | 92362 | 90-380Q | 92380 |
| 90-364Q | 92364 | 90-382Q | 92382 |
| 90-370Q | 92370 | 90-384Q | 92384 |
| 90-372Q | 92372 | | |

2PDT HVAC Relays

JARD Heavy Duty Fan Relays are used on heating and air conditioning equipment to provide switching of heavier loads with a compact size relay.

Features:

- 25 Amp switching
- Universal mounting bracket
- Quick-connect terminals
- UL and CUR



COIL
Terminals 1 & 2, 4 & 5 are normally closed
Terminals 1 & 3, 4 & 6 are normally open

Contact Rating

| | POWER 208/240V | | PILOT 208/240V | |
|-------------------|-------------------|------|-------------------|------|
| | 120V | 277V | 120V | 277V |
| Full load Amps | 12 | 6 | - | - |
| Resistive | 15 | 15 | 3 | 3 |
| Locked Rotor Amps | 60 | 35 | - | - |
| Horsepower | 3/4 | 3/4 | 1/10 | 1/10 |

| JARD NO. | COIL VOLTAGE | TERMINALS 1-2-3 | TERMINALS 4-5-6 | CROSS REFERENCE ESSEX / RBM | HONEYWELL |
|----------|--------------|-----------------|-----------------|--------------------------------|------------|
| 92340 | 24 | | | 90-340 | R8222D1014 |
| 92341 | 110/120 | Power | Power | 90-341 | R4222D1013 |
| 92342 | 208/240 | | | 90-342 | R4222N1021 |

Pressure Switches

Fixed Setting Pressure Controls

High Pressure Cut-Outs

JARD offers the most complete line of high pressure cut-outs available.

Features:

- Tamper proof construction
- Direct mounting on tubing

Specifications:

- Contacts rated at 6 amps, 24-240 volts
- 1/4" female flare S.A.E. mounting
- 18" leads
- UL & CSA recognized



Low Pressure Controls

Features:

- Tamper proof construction
- Direct mounting on tubing

Specifications:

- Contacts rated at 6 amps, 24-240 volts
- 1/4" female flare S.A.E. mounting
- 18" leads
- UL & CSA recognized



Low Pressure Controls, Open on Pressure Fall, Automatic Reset, Normally Open

High Pressure Cut-Outs, Open on Pressure Rise, Automatic Reset, Normally Closed

| JARD NO. | DESCRIPTION | OPENING PRESSURE | RESET PRESSURE | MOUNTING |
|----------|----------------------------|------------------|----------------|---|
| 43922 | 250/150 HP Open on rise | 250 | 150 | 1/4" Female Flare Fitting S.A.E. Mounting |
| 43924 | 275/195 HP Open on rise | 275 | 195 | 1/4" Female Flare Fitting S.A.E. Mounting |
| 43925 | 300/200 HP Open on rise | 300 | 200 | 1/4" Female Flare Fitting S.A.E. Mounting |
| 43926 | 325/225 HP Open on rise | 325 | 225 | 1/4" Female Flare Fitting S.A.E. Mounting |
| 43920 | 350/245 HP Open on rise | 350 | 245 | 1/4" Female Flare Fitting S.A.E. Mounting |
| 43927 | 350/250 HP Open on rise | 350 | 250 | 1/4" Female Flare Fitting S.A.E. Mounting |
| 43928 | 375/275 HP Open on rise | 375 | 275 | 1/4" Female Flare Fitting S.A.E. Mounting |
| 43929 | 400/200 HP Open on rise | 400 | 200 | 1/4" Female Flare Fitting S.A.E. Mounting |
| 43930 | 400/280 HP Open on rise | 400 | 280 | 1/4" Female Flare Fitting S.A.E. Mounting |
| 43931 | 400/300 HP Open on rise | 400 | 300 | 1/4" Female Flare Fitting S.A.E. Mounting |
| 43911 | 410/290 HP Open on rise | 410 | 290 | 1/4" Female Flare Fitting S.A.E. Mounting |
| 43932 | 425/300 HP Open on rise | 425 | 300 | 1/4" Female Flare Fitting S.A.E. Mounting |
| 43933 | 425/325 HP Open on rise | 425 | 325 | 1/4" Female Flare Fitting S.A.E. Mounting |
| 43934 | 450/250 HP Open on rise | 450 | 250 | 1/4" Female Flare Fitting S.A.E. Mounting |
| 43965 | 590/418 HP Open on rise | 590 | 418 | 1/4" Female Flare Fitting S.A.E. Mounting |
| 43935 | 600/475 HP Open on rise | 600 | 475 | 1/4" Female Flare Fitting S.A.E. Mounting |
| 43939 | 630/480 HP Open on rise | 630 | 480 | 1/4" Female Flare Fitting S.A.E. Mounting |

| JARD NO. | DESCRIPTION | OPENING PRESSURE | RESET PRESSURE | MOUNTING |
|----------|----------------------------|------------------|----------------|---|
| 43941 | 5/20 LP Open on fall | 5 | 20 | 1/4" Female Flare Fitting S.A.E. Mounting |
| 43942 | 5/30 LP Open on fall | 5 | 30 | 1/4" Female Flare Fitting S.A.E. Mounting |
| 43943 | 10/25 LP Open on fall | 10 | 25 | 1/4" Female Flare Fitting S.A.E. Mounting |
| 43944 | 15/35 LP Open on fall | 15 | 35 | 1/4" Female Flare Fitting S.A.E. Mounting |
| 43945 | 20/45 LP Open on fall | 20 | 45 | 1/4" Female Flare Fitting S.A.E. Mounting |
| 43946 | 25/50 LP Open on fall | 25 | 50 | 1/4" Female Flare Fitting S.A.E. Mounting |
| 43947 | 25/65 LP Open on fall | 25 | 65 | 1/4" Female Flare Fitting S.A.E. Mounting |
| 43948 | 25/80 LP Open on fall | 25 | 80 | 1/4" Female Flare Fitting S.A.E. Mounting |
| 43949 | 35/60 LP Open on fall | 35 | 60 | 1/4" Female Flare Fitting S.A.E. Mounting |
| 43950 | 40/80 LP Open on fall | 40 | 80 | 1/4" Female Flare Fitting S.A.E. Mounting |
| 43951 | 45/60 LP Open on fall | 45 | 60 | 1/4" Female Flare Fitting S.A.E. Mounting |
| 43952 | 50/90 LP Open on fall | 50 | 90 | 1/4" Female Flare Fitting S.A.E. Mounting |
| 43953 | 75/100 LP Open on fall | 75 | 100 | 1/4" Female Flare Fitting S.A.E. Mounting |
| 43975 | 90/120 LP Open on fall | 90 | 120 | 1/4" Female Flare Fitting S.A.E. Mounting |
| 43954 | 150/225 LP Open on fall | 150 | 225 | 1/4" Female Flare Fitting S.A.E. Mounting |
| 43955 | 170/225 LP Open on fall | 170 | 225 | 1/4" Female Flare Fitting S.A.E. Mounting |

Condenser Fan Cycling Switch

Manual Reset high pressure controls

Specifications:

- UL & CSA recognized



| JARD NO. | DESCR. | OPENING PRESSURE | RESET PRESSURE | MOUNTING | SWITCH ACTION (OPEN ON PRESSURE) |
|----------|-----------------------------|------------------|----------------|--|----------------------------------|
| 43901 | 75/100 FC Close on rise | 75 | 100 | 1/4" Female Flare Fitting S.A.E. Mounting | Fall |
| 43902 | 110/170 FC Close on rise | 110 | 170 | 1/4" Female Flare Fitting S.A.E. Mounting | Fall |
| 43903 | 125/265 FC Close on rise | 125 | 265 | 1/4" Female Flare Fitting S.A.E. Mounting | Fall |
| 43904 | 150/225 FC Close on rise | 150 | 225 | 1/4" Female Flare Fitting S.A.E. Mounting | Fall |
| 43970 | 180/240 FC Close on rise | 180 | 240 | 1/4" Female Flare Fitting S.A.E. Mounting | Fall |
| 43905 | 19/275 FC Close on rise | 190 | 275 | 1/4" Female Flare Fitting S.A.E. Mounting | Fall |
| 43906 | 210/275 FC Close on rise | 210 | 275 | 1/4" Female Flare Fitting S.A.E. Mounting | Fall |
| 43907 | 300/400 FC Close on rise | 300 | 400 | 1/4" Female Flare Fitting S.A.E. Mounting | Fall |
| 43912 | 375/Man. Open on rise | 375 | Manual | 1/4" Female Flare Fitting S.A.E. Mounting | Rise |
| 43913 | 410/Man. Open on rise | 410 | Manual | 1/4" Female Flare Fitting S.A.E. Mounting | Rise |
| 43916 | 475/Man. Open on rise | 475 | Manual | 1/4" Female Flare Fitting S.A.E. Mounting | Rise |

JARD Fuses

Applications:

- Recommended for AC power distribution system mains, feeders, and branch circuits.
- Protection of motors and motor branch circuits.
- Protection of transformers and other inductive loads.
- All general-purpose applications including lighting, heating and other non-inductive loads.

Benefits:

- Superior overload and cycling capabilities.
- Current limiting provides component short-circuit protection.

Specifications:

Dual-Element Time-Delay

Voltage Rating: RK5 - 250Vac,

RK5 - 600Vac

Amp Rating: 1/10 - 600A

Interrupting Rating: 200,000 RMS Symmetrical Amps

Current Limiting: RK5 Fuse

Agency Approvals:

UL Listed, Class RK5, CSA Certified, DC listed to UL standard

248 TRS only

Voltage Rating: RK5 250V

Volts: 250VAC

: 250VDC (.1-2.8A; 35-400A)

: 160VDC (3-30A; 450-600A)

RK5 600V

Volts: 600VAC

: 600VDC (.1-12A; 70-600A)

: 160VDC (15-60A)



RK5 Time Delay Fuse 250V

Replaces: TR, ECNR, FRNR, FLNR

| MARS NO. | DESCRIPTION | MARS PACK |
|----------|--------------|-----------|
| 81006 | .5A - 250V | 10 |
| 81009 | 1A - 250V | 10 |
| 81016 | 2A - 250V | 10 |
| 81017 | 2.5A - 250V | 10 |
| 81019 | 3A - 250V | 10 |
| 81020 | 3.2A - 250V | 10 |
| 81021 | 4A - 250V | 10 |
| 81024 | 5A - 250V | 10 |
| 81025 | 5.6A - 250V | 10 |
| 81026 | 6A - 250V | 10 |
| 81027 | 6.25A - 250V | 10 |
| 81029 | 7A - 250V | 10 |
| 81030 | 8A - 250V | 10 |
| 81032 | 10A - 250V | 10 |
| 81033 | 12A - 250V | 10 |
| 81034 | 15A - 250V | 10 |
| 81035 | 17.5A - 250V | 10 |
| 81036 | 20A - 250V | 10 |
| 81037 | 25A - 250V | 10 |
| 81038 | 30A - 250V | 10 |
| 81039 | 35A - 250V | 10 |
| 81040 | 40A - 250V | 10 |
| 81041 | 45A - 250V | 10 |
| 81042 | 50A - 250V | 10 |
| 81043 | 60A - 250V | 10 |
| 81044 | 70A - 250V | 5 |
| 81045 | 80A - 250V | 5 |
| 81046 | 90A - 250V | 5 |
| 81047 | 100A - 250V | 5 |
| 81048 | 110A - 250V | 1 |
| 81049 | 125A - 250V | 1 |
| 81050 | 150A - 250V | 1 |
| 81051 | 175A - 250V | 1 |
| 81052 | 200A - 250V | 1 |
| 81053 | 225A - 250V | 1 |
| 81054 | 350A - 250V | 1 |
| 81056 | 400A - 250V | 1 |
| 81055 | 600A - 250V | 1 |

RK5 Time Delay Fuse 600V

Replaces: TRS, ECSR, FRSR, FLRS

| MARS NO. | DESCRIPTION | MARS PACK |
|----------|--------------|-----------|
| 81103 | .2A - 600V | 10 |
| 81106 | .5A - 600V | 10 |
| 81109 | 1A - 600V | 10 |
| 81110 | 1.6A - 600V | 10 |
| 81111 | 2A - 600V | 10 |
| 81112 | 2.25A - 600V | 10 |
| 81124 | 5A - 600V | 10 |
| 81125 | 6A - 600V | 10 |
| 81132 | 10A - 600V | 10 |
| 81133 | 12A - 600V | 10 |
| 81134 | 15A - 600V | 10 |
| 81136 | 20A - 600V | 10 |
| 81137 | 25A - 600V | 10 |
| 81138 | 30A - 600V | 10 |
| 81139 | 35A - 600V | 10 |
| 81140 | 40A - 600V | 10 |
| 81147 | 45A - 600V | 10 |
| 81141 | 50A - 600V | 10 |
| 81142 | 60A - 600V | 10 |
| 81143 | 70A - 600V | 5 |
| 81144 | 80A - 600V | 5 |
| 81145 | 90A - 600V | 5 |
| 81146 | 100A - 600V | 5 |
| 81154 | 110A - 600V | 1 |
| 81148 | 125A - 600V | 1 |
| 81149 | 150A - 600V | 1 |
| 81150 | 175A - 600V | 1 |
| 81151 | 200A - 600V | 1 |
| 81152 | 250A - 600V | 1 |
| 81153 | 300A - 600V | 1 |

Unit Bearing Motors / Condenser Fan Motors

Unit Bearing Motors

JARD Unit Bearing Cast Iron Motors are used on refrigerators, freezers, food & beverage coolers, vending machines, display cases, and many other fan duty applications.

Features:

- Cast iron construction
- Universal mount
- Mounting screws included
- Individually boxed

Specifications:

- Class "A" insulation
- UL Recognized



| JARD NO. | WATTS | VOLTAGE | ROTATION | AMPS | LEAD LENGTH |
|----------|-------|---------|----------|------|-------------|
| 15109 | 2 | 115 | CW | 0.28 | 24" |
| 15211 | 4 | 115 | CW | 0.33 | 24" |
| 15212 | 4 | 115 | CCW | 0.33 | 24" |
| 15221 | 4 | 230 | CW | 0.19 | 24" |
| 15222 | 4 | 230 | CCW | 0.19 | 24" |
| 15311 | 6 | 115 | CW | 0.46 | 24" |
| 15312 | 6 | 115 | CCW | 0.46 | 24" |
| 15119* | 9 | 115 | CW | 0.62 | 13" |
| 15411 | 9 | 115 | CW | 0.62 | 24" |
| 15412 | 9 | 115 | CCW | 0.62 | 24" |
| 15421 | 9 | 230 | CW | 0.33 | 24" |
| 15422 | 9 | 230 | CCW | 0.33 | 24" |
| 15811 | 16 | 115 | CW | 0.95 | 24" |
| 15812 | 16 | 115 | CCW | 0.95 | 24" |
| 15821 | 16 | 230 | CW | 0.48 | 24" |
| 15822 | 16 | 230 | CCW | 0.48 | 24" |

* Note: 13" lead with lyall plug

Condenser Fan Motors

Ball Bearing

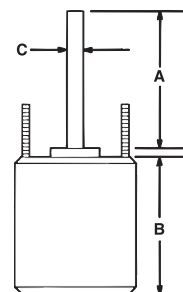
JARD replacement condenser fan motors are designed for residential and light commercial HVAC/R applications suitable for either vertical shaft-up or shaft-down mounting. Shell and end shields are enclosed for weather protection. A weep hole is provided in each end shield to allow condensate to drain.

Features:

- All angle, sleeve or ball bearing
- Rheem mounting holes w/screws
- Reversible rotation
- Thru bolt or band mounting
- Capacitor requirement noted on motor label
- Up/Down design

Specifications:

- Class "B" insulation
- Single phase, 60 Hz
- Thermal overload protected
- Fan duty, continuous air over
- 26 & 36 inch leads
- UL Recognized



Cross Reference:

| JARD NO. | ECONOMASTER | SMART ELECTRIC | WAGNER/DIVERSITECH | PACKARD | US MOTORS/EMERSON |
|----------|-------------|----------------|--------------------|---------|-------------------|
| 22403 | EM3403 | - | - | 60825 | 1873 |
| 22404 | EM3404 | SE3338 | WG840204 | 40825 | 1874 |
| 22405 | EM3405 | SE3339 | WG840205 | 30825 | 1875 |
| 22746 | EM3746 | - | - | - | 1870 |
| 22727 | EM3727 | SE3727 | WG840727 | 43727 | 1859 |
| 22728 | EM3728 | SE3728 | WG840728 | 43728 | 1860 |
| 22729 | EM3729 | SE3729 | WG840729 | 43729 | 1861 |
| 22730 | EM3730 | SE3730 | WG840730 | 43730 | 1862 |
| 22731 | EM3731 | SE3731 | WG840731 | 43731 | 1868 |

Reversible Rotation – Single Speed

| MARS NO. | HP | VOLTS | AMPS | CAP REQ. | ENCL. | BRG. | DIMENSIONS | | | LEAD LENGTHS |
|----------|----|-------|------|----------|-------|------|------------|---|---|--------------|
| | | | | | | | A | B | C | |

1075 RPM

| | | | | | | | | | | |
|-------|-----|---------|------|---------|------|------|------|------|-----|-------|
| 22727 | 1/6 | 208-230 | 0.90 | 5/370 | TEAO | Ball | 6.50 | 4.23 | 1/2 | 26" |
| 22728 | 1/4 | 208-230 | 1.8 | 5/370 | TEAO | Ball | 6.50 | 4.23 | 1/2 | 26" |
| 22729 | 1/3 | 208-230 | 2.4 | 7.5/370 | TEAO | Ball | 6.50 | 5.23 | 1/2 | 26" |
| 22730 | 1/2 | 208-230 | 3.5 | 10/370 | TEAO | Ball | 6.50 | 5.73 | 1/2 | 26" |
| 22731 | 3/4 | 208-230 | 5.2 | 10/370 | TEAO | Ball | 6.50 | 6.23 | 1/2 | 30.5" |

| MARS NO. | HP | VOLTS | AMPS | CAP REQ. | ENCL. | BRG. | DIMENSIONS | | | LEAD LENGTHS |
|----------|----|-------|------|----------|-------|------|------------|---|---|--------------|
| | | | | | | | A | B | C | |

825 RPM

| | | | | | | | | | | |
|-------|-----|---------|-----|----------|------|------|------|------|-----|-----|
| 22403 | 1/6 | 208-230 | 1.0 | 5/370 | TEAO | Ball | 6.50 | 4.23 | 1/2 | 36" |
| 22404 | 1/4 | 208-230 | 1.6 | 5/370 | TEAO | Ball | 6.50 | 4.48 | 1/2 | 36" |
| 22405 | 1/3 | 208-230 | 1.9 | 7.5/370 | TEAO | Ball | 6.50 | 5.23 | 1/2 | 36" |
| 22746 | 1/2 | 208-230 | 2.8 | 12.5/370 | TEAO | Ball | 6.50 | 5.70 | 1/2 | 36" |

Direct Drive Blower Motors

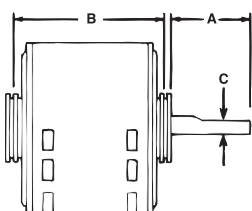
JARD direct drive blower motors are ideal for use in commercial and residential furnaces and air-conditioners. All models are three speed standard efficiency and are electrically reversible.

Features:

- All angle sleeve bearing
- Rheem mounting holes
- 3 speeds
- 1/2 inch extended thru bolts
- 2-1/4 inch resilient rings
- 4 inch long, 1/2 inch diameter shaft

Specifications:

- Class "B" insulation
- Single phase, 60 Hertz
- Thermal overload protected
- Fan duty, continuous, air over
- Open construction
- 26 & 30 inch leads
- UL Recognized



Multi-Horsepower Direct Drive Motors

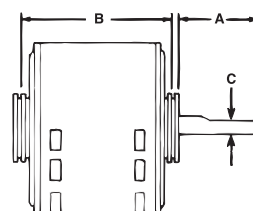
JARD multi-horsepower direct drive blower motors are used in residential and commercial furnaces, air conditioners, exhaust fans, and other air handling equipment installed in clean and dry environments. Four models cover both 115 and 208-230 volt applications from 1/6 through 3/4 HP. All models feature Rheem shell mounting holes.

Features:

- Rheem mounting holes
- Reversible rotation
- 2-1/4 inch resilient rings

Specifications:

- Class "B" insulation
- Single phase, 60 Hz
- Thermal overload protected
- 41 inch leads
- UL Recognized



Cross Reference:

| JARD NO. | ECONOMASTER | SMART ELECTRIC | WAGNER/DIVERSITECH | PACKARD | US MOTORS/EMERSON |
|----------|-------------|----------------|--------------------|---------|-------------------|
| 22583 | EM3583 | SE3583 | WG840583 | 43583 | 1863 |
| 22584 | EM3584 | SE3584 | WG840584 | 43584 | 1971 |
| 22585 | EM3585 | SE3585 | WG840585 | 43585 | 1864 |
| 22586 | EM3586 | SE3586 | WG840586 | 43586 | 1972 |
| 22587 | EM3587 | SE3587 | WG840587 | 43587 | 1865 |
| 22588 | EM3588 | SE3588 | WG840588 | 43588 | 1973 |
| 22589 | EM3589 | SE3589 | WG840589 | 43589 | 8904 |
| 22590 | EM3590 | SE3590 | WG840590 | 43590 | 8905 |

Cross Reference:

| JARD NO. | ECONOMASTER | SMART ELECTRIC | WAGNER/DIVERSITECH | PACKARD | US MOTORS/EMERSON |
|----------|-------------|----------------|--------------------|---------|-------------------|
| 22463 | EM3463 | SE3463 | WG840463 | 45460 | 5460 |
| 22464 | EM3464 | SE3464 | WG840464 | 45461 | 5461 |
| 22466 | EM3466 | SE3466 | WG840466 | 45470 | 5470 |
| 22467 | EM3467 | SE3467 | WG840467 | 45471 | 5471 |

1075 RPM – Three Speed – Reversible Rotation

| MARS NO. | HP | ROT | VOLTS | AMPS | CAP REQ. | ENCL. | BRG. | DIMENSIONS | | | LEAD LENGTHS |
|----------|-----|-----|---------|------|----------|-------|------|------------|------|-----|--------------|
| | | | | | | | | A | B | C | |
| 22583 | 1/4 | Rev | 115 | 4.2 | 5/370 | OAO | Ball | 4.50 | 4.89 | 1/2 | 26" |
| 22584 | 1/4 | Rev | 208-230 | 1.8 | 5/370 | OAO | Ball | 4.50 | 4.89 | 1/2 | 26" |
| 22585 | 1/3 | Rev | 115 | 6.1 | 5/370 | OAO | Ball | 4.50 | 5.14 | 1/2 | 30" |
| 22586 | 1/3 | Rev | 208-230 | 2.7 | 5/370 | OAO | Ball | 4.50 | 5.14 | 1/2 | 26" |
| 22587 | 1/2 | Rev | 115 | 7.5 | 10/370 | OAO | Ball | 4.50 | 5.89 | 1/2 | 30" |
| 22588 | 1/2 | Rev | 208-230 | 3.2 | 7.5/370 | OAO | Ball | 4.50 | 5.64 | 1/2 | 30" |
| 22589 | 3/4 | Rev | 115 | 11.2 | 15/370 | OAO | Ball | 4.50 | 6.14 | 1/2 | 30" |
| 22590 | 3/4 | Rev | 208-230 | 4.5 | 10/370 | OAO | Ball | 4.50 | 6.14 | 1/2 | 30" |

1075 RPM - Four Speed - Reversible Rotation

| MARS NO. | HP | ROT | VOLTS | ENCL. | BRG. | DIMENSIONS | | | LEAD LENGTHS |
|----------|-----------|-----|-------|-------|--------|------------|------|-----|--------------|
| | | | | | | A | B | C | |
| 22463 | 1/6 - 1/2 | Rev | 115 | OAO | Sleeve | 5.50 | 4.73 | 1/2 | 42" |
| 22464 | 1/6 - 1/2 | Rev | 230 | OAO | Sleeve | 5.50 | 4.73 | 1/2 | 41" |
| 22466 | 1/5 - 3/4 | Rev | 115 | OAO | Ball | 5.80 | 5.73 | 1/2 | 41" |
| 22467 | 1/5 - 3/4 | Rev | 230 | OAO | Ball | 4.60 | 5.23 | 1/2 | 41" |

Multi-Horsepower Motors / Condenser Fan Motors

Multi-Horsepower Condenser Fan Motors

Ball Bearing

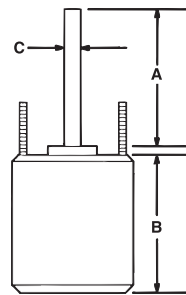
JARD multi-horsepower condenser fan motors are designed for either shaft up or shaft down applications. All motors are suitable for air conditioning or heat pump applications. These motors need to be mounted within the airflow of the fan for proper cooling.

Features:

- Rheem mounting holes w/screws installed
- Thru bolt or band mounting
- Water slinger on shaft
- Air conditioning or heat pump duty

Specifications:

- Class "B" insulation
- Single phase, 60 Hz
- Thermal overload protected
- UL Recognized



Cross Reference:

| JARD NO. | ECONOMASTER | SMART ELECTRIC | WAGNER/DIVERSITECH | PACKARD | US MOTORS/EMERSON |
|----------|-------------|----------------|--------------------|---------|-------------------|
| 22458 | EM3458 | - | - | 45458BF | 5458 |
| 22459 | EM3459 | - | - | 45488BF | 5464 |
| 22465 | EM3465 | SE3465 | WG840465 | 45458B | 5462 |
| 22468 | EM3468 | SE3468 | WG840468 | - | 5465 |
| 22469 | EM3469 | SE3469 | WG840469 | - | 5464 |

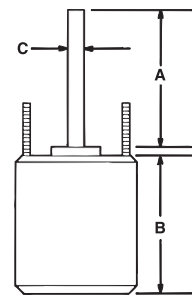
Reversible Rotation – Single Speed

| MARS NO. | HP | ROT | RPM/SPEED | VOLTS | ENCL. | BRG. | DIMENSIONS | | | LEAD LENGTHS |
|----------|-----------|-----|-----------|---------|-------|------|------------|------|-----|--------------|
| | | | | | | | A | B | C | |
| 22458 | 1/6 - 1/3 | Rev | 1075 | 208-230 | TEAO | Ball | 6.50 | 3.82 | 1/2 | 36" |
| 22459 | 1/8 - 1/3 | Rev | 825 | 208-230 | TEAO | Ball | 6.50 | 5.48 | 1/2 | 36" |
| 22465 | 1/6 - 1/3 | Rev | 1075/2 | 208-230 | TEAO | Ball | 5.00 | 4.73 | 1/2 | 38" |
| 22468 | 1/8 - 1/2 | Rev | 1075/2 | 208-230 | TEAO | Ball | 5.00 | 5.48 | 1/2 | 38" |
| 22469 | 1/6 - 1/3 | Rev | 825/2 | 208-230 | TEAO | Ball | 5.00 | 5.48 | 1/2 | 42" |

Condenser Fan Motors

Ball Bearing

JARD replacement condenser fan motors are designed for residential and light commercial HVAC/R applications suitable for either vertical shaft-up or shaft-down mounting. Shell and end shields are enclosed for weather protection. A weep hole is provided in each end shield to allow condensate to drain.



Features:

- All angle, ball bearing
- Rheem mounting holes w/screws
- Reversible rotation
- Thru bolt or band mounting
- Capacitor requirement noted on motor label
- Up/Down design
- 48" Leads

Specifications:

- Class "B" insulation
- Single phase, 60 Hz
- 70°C, 158°F
- Thermal overload protected
- Fan duty, continuous air over
- UL Recognized

Reversible Rotation – Single Speed

| MARS NO. | HP | VOLTS | AMPS | CAP REQ. | ENCL. | BRG. | DIMENSIONS | | |
|-----------------|-----|---------|------|----------|-------|------|------------|------|-----|
| | | | | | | | A | B | C |
| 1075 RPM | | | | | | | | | |
| 26726 | 1/5 | 208-230 | 0.90 | 5/370 | TEAO | Ball | 6.50 | 4.23 | 1/2 |
| 26727 | 1/6 | 208-230 | 0.90 | 5/370 | TEAO | Ball | 6.50 | 4.23 | 1/2 |
| 26728 | 1/4 | 208-230 | 1.8 | 5/370 | TEAO | Ball | 6.50 | 4.23 | 1/2 |
| 26729 | 1/3 | 208-230 | 2.4 | 7.5/370 | TEAO | Ball | 6.50 | 5.23 | 1/2 |
| 26730 | 1/2 | 208-230 | 3.5 | 10/370 | TEAO | Ball | 6.50 | 5.73 | 1/2 |
| 26731 | 3/4 | 208-230 | 5.2 | 10/370 | TEAO | Ball | 6.50 | 6.23 | 1/2 |

| MARS NO. | HP | VOLTS | AMPS | CAP REQ. | ENCL. | BRG. | DIMENSIONS | | |
|----------------|-----|---------|------|----------|-------|------|------------|------|-----|
| | | | | | | | A | B | C |
| 825 RPM | | | | | | | | | |
| 26403 | 1/6 | 208-230 | 1.0 | 5/370 | TEAO | Ball | 6.50 | 4.23 | 1/2 |
| 26404 | 1/4 | 208-230 | 1.6 | 5/370 | TEAO | Ball | 6.50 | 4.48 | 1/2 |
| 26405 | 1/3 | 208-230 | 1.9 | 7.5/370 | TEAO | Ball | 6.50 | 5.23 | 1/2 |
| 26746 | 1/2 | 208-230 | 2.8 | 12.5/370 | TEAO | Ball | 6.50 | 5.70 | 1/2 |

Multi-Horsepower Condenser Fan Motors

Ball Bearing

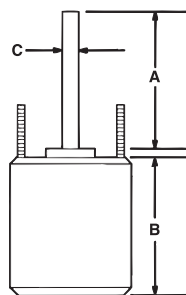
JARD multi-horsepower condenser fan motors are designed for either shaft up or shaft down applications. All motors are suitable for air conditioning or heat pump applications. These motors need to be mounted within the airflow of the fan for proper cooling.

Features:

- Rheem mounting holes w/screws installed
- Thru bolt or band mounting
- Water slinger on shaft
- Air conditioning or heat pump duty
- 48" Leads

Specifications:

- Class "B" insulation
- Single phase, 60 Hz
- 70°C, 158°F
- Thermal overload protected
- UL Recognized



| MARS NO. | HP | ROT | RPM/SPEED | VOLTS | ENCL. | BRG. | DIMENSIONS | | |
|----------|-----------|-----|-----------|---------|-------|------|------------|------|-----|
| | | | | | | | A | B | C |
| 26458 | 1/6 - 1/3 | Rev | 1075 | 208-230 | TEAO | Ball | 6.50 | 3.82 | 1/2 |
| 26459 | 1/8 - 1/3 | Rev | 825 | 208-230 | TEAO | Ball | 6.50 | 5.48 | 1/2 |
| 26465 | 1/6 - 1/3 | Rev | 1075/2 | 208-230 | TEAO | Ball | 5.00 | 4.73 | 1/2 |
| 26468 | 1/8 - 1/2 | Rev | 1075/2 | 208-230 | TEAO | Ball | 5.00 | 5.48 | 1/2 |
| 26469 | 1/6 - 1/3 | Rev | 825/2 | 208-230 | TEAO | Ball | 5.00 | 5.48 | 1/2 |

JARD Cross Reference:

| JARD NO. | ECONOMASTER | SMART ELECTRIC | WAGNER/DIVERSITECH | PACKARD | US MOTORS/EMERSON |
|----------|-------------|----------------|--------------------|---------|-------------------|
| 22403 | EM3403 | - | - | 60825 | 1873 |
| 22404 | EM3404 | SE3338 | WG840204 | 40825 | 1874 |
| 22405 | EM3405 | SE3339 | WG840205 | 30825 | 1875 |
| 22746 | EM3746 | - | - | - | 1870 |
| 22727 | EM3727 | SE3727 | WG840727 | 43727 | 1859 |
| 22728 | EM3728 | SE3728 | WG840728 | 43728 | 1860 |
| 22729 | EM3729 | SE3729 | WG840729 | 43729 | 1861 |
| 22730 | EM3730 | SE3730 | WG840730 | 43730 | 1862 |
| 22731 | EM3731 | SE3731 | WG840731 | 43731 | 1868 |
| 22583 | EM3583 | SE3583 | WG840583 | 43583 | 1863 |
| 22584 | EM3584 | SE3584 | WG840584 | 43584 | 1971 |
| 22585 | EM3585 | SE3585 | WG840585 | 43585 | 1864 |
| 22586 | EM3586 | SE3586 | WG840586 | 43586 | 1972 |
| 22587 | EM3587 | SE3587 | WG840587 | 43587 | 1865 |
| 22588 | EM3588 | SE3588 | WG840588 | 43588 | 1973 |
| 22589 | EM3589 | SE3589 | WG840589 | 43589 | 8904 |
| 22590 | EM3590 | SE3590 | WG840590 | 43590 | 8905 |
| 22463 | EM3463 | SE3463 | WG840463 | 45460 | 5460 |
| 22464 | EM3464 | SE3464 | WG840464 | 45461 | 5461 |
| 22466 | EM3466 | SE3466 | WG840466 | 45470 | 5470 |
| 22467 | EM3467 | SE3467 | WG840467 | 45471 | 5471 |
| 22458 | EM3458 | - | - | 45458BF | 5458 |
| 22459 | EM3459 | - | - | 45488BF | 5464 |
| 22465 | EM3465 | SE3465 | WG840465 | 45458B | 5462 |
| 22468 | EM3468 | SE3468 | WG840468 | - | 5465 |
| 22469 | EM3469 | SE3469 | WG840469 | - | 5464 |
| 26726 | - | - | - | - | - |
| 26727 | EM3727 | - | WG840727 | 43727 | 1859 |
| 26728 | EM3728 | - | WG840728 | 43728 | 1860 |
| 26729 | EM3729 | - | WG840729 | 43729 | 1861 |
| 26730 | EM3730 | - | WG840730 | 43730 | 1862 |
| 26731 | EM3731 | - | WG840731 | 43731 | 1868 |
| 26403 | EM3403 | - | - | 60825 | 1873 |
| 26404 | EM3404 | - | WG840204 | 40825 | 1874 |
| 26405 | EM3405 | - | WG840205 | 30825 | 1875 |
| 26746 | EM3746 | - | - | - | 1870 |
| 26458 | EM3458 | - | - | - | 5458 |
| 26459 | EM3459 | - | - | - | 5464 |
| 26465 | EM3465 | - | WG840465 | - | 5462 |
| 26468 | EM3468 | - | WG840468 | - | 5465 |
| 26469 | EM3469 | - | WG840469 | - | 5464 |

JARD to MARS Cross Reference Guide

Start Capacitors

Table with 2 columns: JARD, MARS. Lists capacitor models from 11903 to 11962.

Run Capacitors

Table with 2 columns: JARD, MARS. Lists capacitor models from 12902 to 12914.

Run Capacitors

Table with 2 columns: JARD, MARS. Lists capacitor models from 12915 to 12940.

Run Capacitors

Table with 2 columns: JARD, MARS. Lists capacitor models from 12941 to 12999.

Run Capacitors

Table with 2 columns: JARD, MARS. Lists capacitor models from 12916 to 12732.

Run Capacitors

Table with 2 columns: JARD, MARS. Lists capacitor models from 12733 to 12935.

Run Capacitors

Table with 2 columns: JARD, MARS. Lists capacitor models from 12801 to 43916.

Contactors

Table with 2 columns: JARD, MARS. Lists contactor models from 17121 to 17999.

Pressure Switches

Table with 2 columns: JARD, MARS. Lists pressure switch models from 43901 to 43916.

Pressure Switches

Table with 2 columns: JARD, MARS. Lists pressure switch models from 43920 to 43975.

Switching Relays

Table with 2 columns: JARD, MARS. Lists relay models from 92290 to 92384.

Unit Bearing Motors

Table with 2 columns: JARD, MARS. Lists motor models from 15109 to 15822.